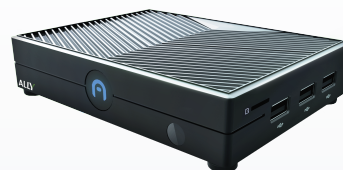
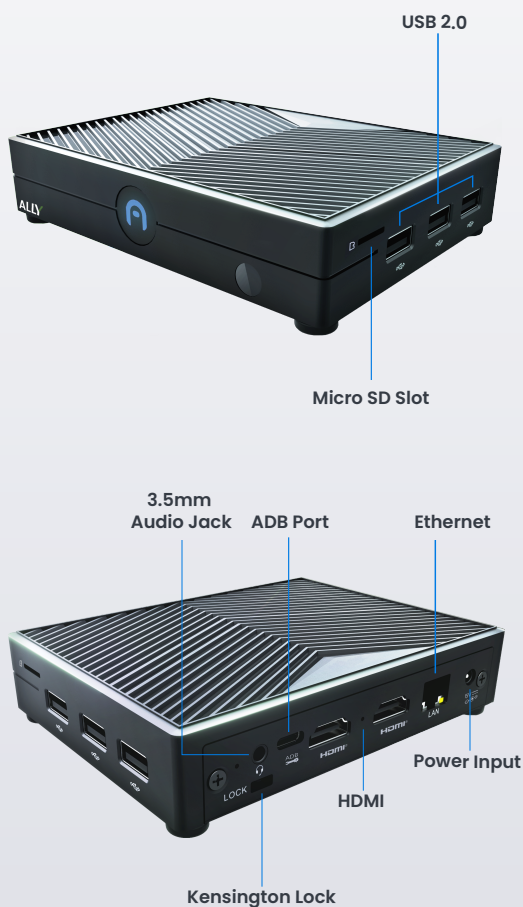


ALLY Qualcomm



The Ally is Azulle's Android-based enterprise mini PC designed to bring versatility and performance to businesses of all sizes. Powered by the robust Qualcomm SM6125 Snapdragon 665 processor, it supports seamless integration with enterprise applications and tools.

PORTS & FEATURES



PRODUCT SPECIFICATIONS

MEMORY

RAM INSTALLED	Embedded 4GB; LPDDR4X
---------------	-----------------------

STORAGE

STORAGE	64GB eMMC
---------	-----------

OS/OTHER

OPERATING SYSTEM	Android 10
WI-FI	SLM920, 802.11
GPU MODEL & MANUFACTURER	Qualcomm 512

PROCESSOR

PROCESSOR, MODEL & MANUFACTURER	Qualcomm 6125 SLM920
PROCESSOR CORE COUNT	8

NETWORK

ETHERNET	1 Gbps
BLUETOOTH	SLM920, supports Bluetooth 5.0
WIRELESS LAN (TYPE)	WiFi 5

INTERFACES/PORTS

HDMI® (NUMBER)	HDMI (x2)
HDMI® OUTPUT	1080p @60fps
USB PORTS	USB 2.0 (x3)
TYPE-C PORT	ADB only
MICRO SD CARD SLOT	(x1)
AUDIO OUTPUT	3.5 mm audio jack with L/R/MIC combo (x1)
POWER CONNECTOR	Barrel Plug
POWER SUPPLY	5V/3A
WEIGHT	0.66 lbs
DIMENSIONS	5 x 3.78 x 1 in
WARRANTY	3 year manufacturer's warranty

MOST POPULAR CASES

- 1 Kiosks
- 2 Manufacturing
- 3 Digital Signage
- 4 Wayfinding Machines